



Transformer  
950 V



Transformer  
3200 V to 6600 V



## DRY TYPE TRANSFORMER

1.1 kV à 7.2 kV class

Product leaflet

- According to : IEC 60076, NF C 17-200, UE 548/2014 - 2021
- Off load tap changers +/-5 %
- Protected by thermal probes
- Impregnated transformer, environmental resin
- Robust transformer long service life

<b>PRESENTATION</b>	3
<b>TRANSFORMER RANGE</b>	3
<b>ACCESSORIES</b>	3
<b>STANDARDS</b>	3
<b>TRANSFORMERS 950 V</b>	
<i>Mechanical characteristics</i>	4
<i>Electrical Specifications</i>	4
<i>Example of drawings</i>	5
<b>TRANSFORMERS 3200 V 5500 V 6600 V</b>	
<i>Mechanical characteristics</i>	6
<i>Electrical Specifications</i>	6
<i>Example of drawings</i>	7

# PRESENTATION

## Dry type transformer

### Generalities

AUGIER impregnated dry type transformers are intended to be installed in an AUGIER, PTS95, PTS32 and PTM transformer station or in a dry and ventilated room.

- ◆ Cooling in natural air AN
- ◆ Ambient operating temperature from -15 °C to + 40 °C,
- ◆ On request from -15 °C to + 55 °C
- ◆ Altitude below 1000 meters
- ◆ Transformers designed to limit the inrush currents
- ◆ Insulation voltage 1.1 kV - 3.6 kV - 7.2 kV
- ◆ Step-up or step-down transformer
- ◆ Inrush current less than 15 In



Construction:

- ◆ Low loss oriented crystal plate magnetic circuits
- ◆ Aluminum or copper coils, vacuum impregnated, class H and finished with the application of a fungicidal varnish
- ◆ Metal flanges

COUPLING	DESIGNATION	RATED POWER	LEVEL of VOLTAGE
Single phase	TMAI	3 to 50 kVA	950 V - 3200 V
Three phase	TTAI	10 to 160 kVA	950 V - 3200 V - 5500 V - 6600 V
Three phase - Single phase	TTMAI	25 to 160 kVA	3200 V
Three phase - Two phases	TTBAI	25 to 160 kVA	3200 V

### Standard accessories

- ◆ Off load tap changer: three positions - 5% 0 + 5%
- ◆ One threshold thermal probe, terminal output
- ◆ Earth terminals
- ◆ Lifting eyes
- ◆ Connection to pads or terminal blocks according to voltage

### Optional accessories

- ◆ Two-threshold thermal probe, output on terminals
- ◆ Rollers
- ◆ IP21 protective enclosure - RAL 7035



### Standards

The impregnated dry type transformers meet the recommendations of the standards:

CEI - NF EN 60076-1	Power transformers - Part 1: general
CEI - NF EN 60076-11	Power transformers - Part 11: dry transformer
UE 548/2014 - 2021	European regulations for low, medium and high power transformers
NFC 17-200	Outdoor electrical installations

# CHARACTERISTICS

## 950 V

## Dry type transformer

- ♦ Dry type impregnated transformers 950 V

Mechanical characteristics	Single phase transformer							
	Rated power (kVA)	3	5	10	16	25	32	50
Length (mm)	240	240	280	320	320	320	320	400
Width (mm)	195	212	250	340	370	370	370	410
Height (mm)	330	380	425	490	550	550	560	600
Total weight (kg)	33	42	63	98	130	130	135	175

Electrical Specifications	Single phase transformer							
	Rated power (kVA)	3	5	10	16	25	32	50
No-load losses (W)	41	72	93	126	220	220	310	380
Copper losses (W) à 120°C	110	240	423	500	850	850	1110	1240
Short circuit voltage (%)	3.5	4.5	3.9	3.5	3.5	3.5	4.31	3.73



Mechanical characteristics	Three phases transformer								
	Rated power (kVA)	10	16	25	32	50	63	80	100
Length (mm)	360	420	480	480	600	600	600	600	600
Width (mm)	290	350	360	360	410	420	420	440	450
Height (mm)	430	530	530	495	600	630	630	630	650
Total weight (kg)	80	120	150	180	260	295	295	340	350

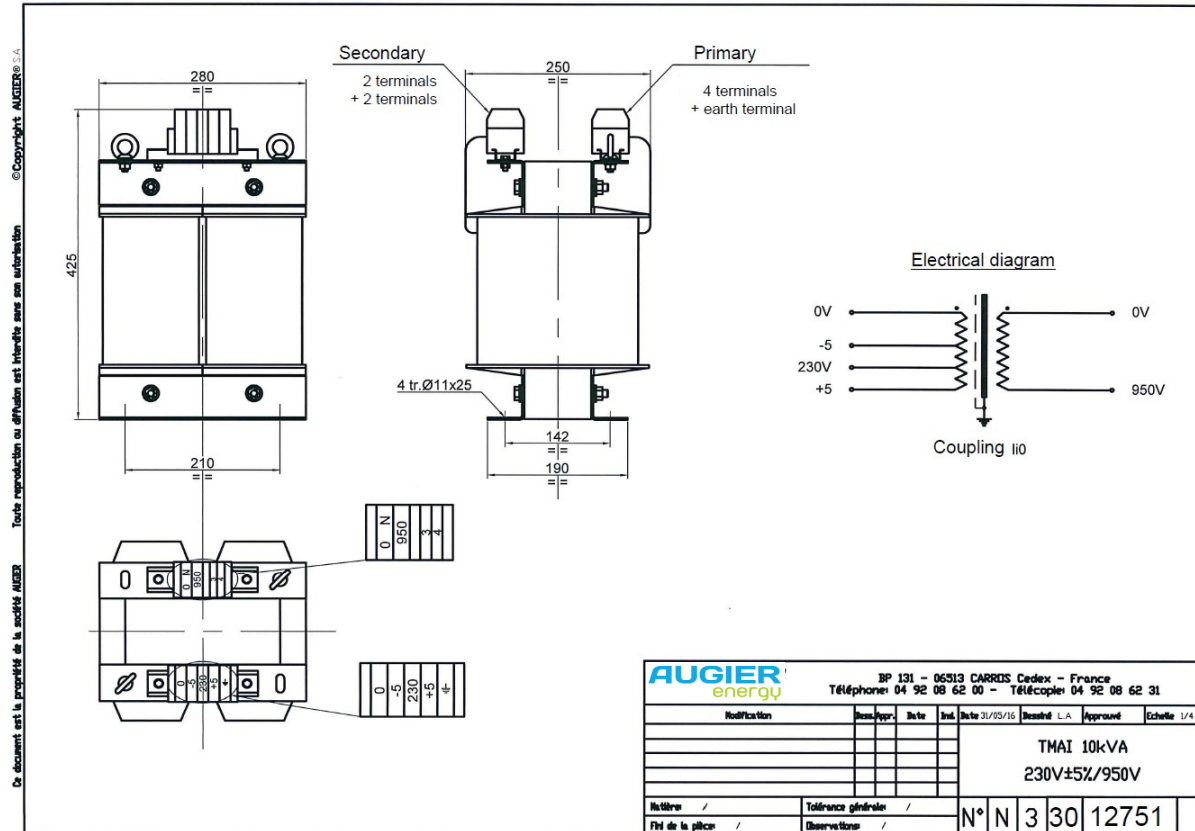
Electrical Specifications	Three phases transformer								
	Rated power (kVA)	10	16	25	32	50	63	80	100
No-load losses (W)	157	228	340	347	495	495	501	594	650
Copper losses (W) à 120°C	348	856	950	962	1690	1690	1700	1873	2050
Short circuit voltage (%)	3.48	5.5	3.95	3.30	4	4	3.6	3.46	4



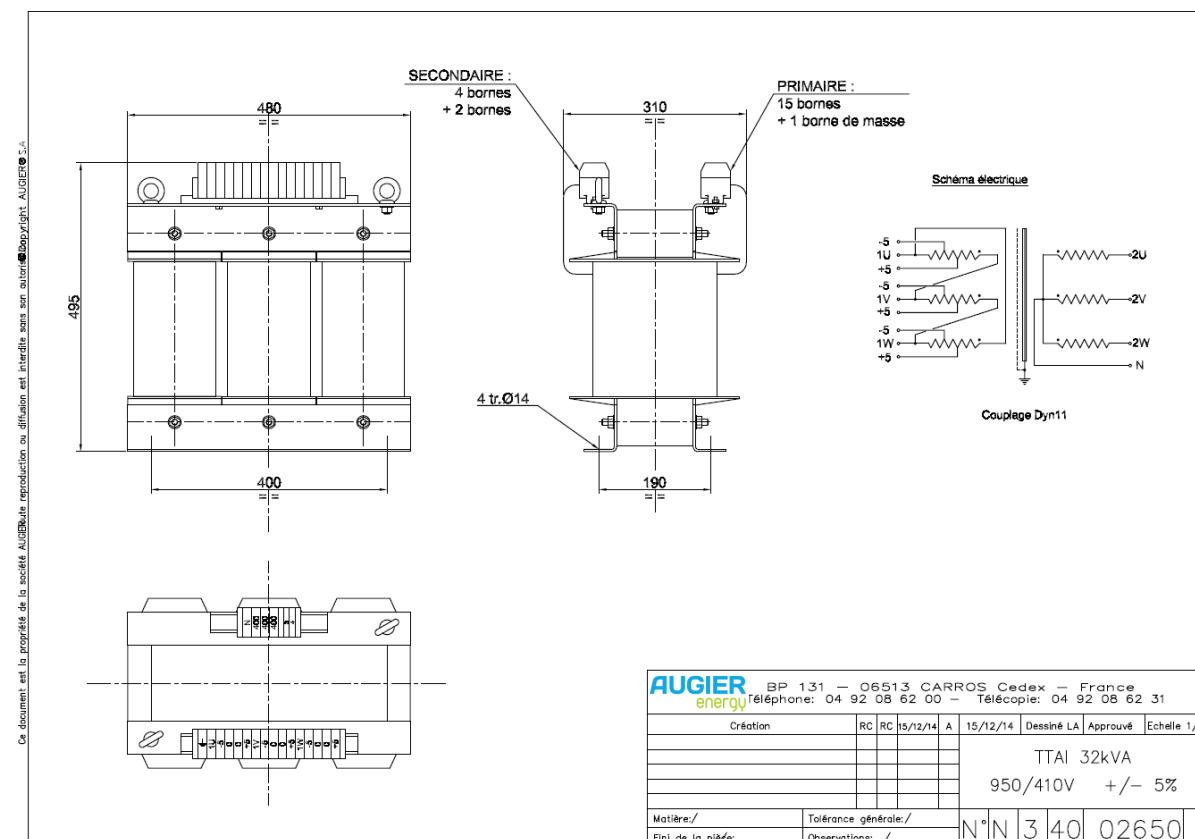
# DRAWINGS EXAMPLE 950 V

## Dry type transformer

- ◆ Single-phase 950 V transformer: Connection, tap changer



- ◆ Three-phase 950 V transformer: Connection, taps changer



# CHARACTERISTICS

## 3200 V 5500 V 6600 V

# Dry type transformer

- ♦ Dry type impregnated transformers 3200 V - 5500 V - 6600 V

Mechanical characteristics	Single phase transformer							
	Rated power (kVA)	3	5	10	16	25	32	50
	Length (mm)	220	250	320	340	420	480	630
	Width (mm)	200	210	280	300	350	370	420
	Height (mm)	350	380	615	690	555	680	680
	Total weight (kg)	35	45	80	110	125	250	290



Electrical Specifications	Single phase transformer							
	Rated power (kVA)	3	5	10	16	25	32	50
	No-load losses (W)	60	70	85	140	170	182	250
	Copper losses (W) à 120°C	90	180	455	500	850	1078	1400
	Short circuit voltage (%)	4	5.8	5	3.5	4.6	4.05	5



Mechanical characteristics	Three phases transformer										
	Rated power (kVA)	10	16	25	32	50	63	80	100	125	160
	Length (mm)	500	550	600	620	720	720	780	810	870	870
	Width (mm)	280	300	300	350	440	450	500	480	500	500
	Height (mm)	620	650	685	690	820	820	850	950	950	970
	Total weight (kg)	120	170	184	205	320	350	410	515	577	660

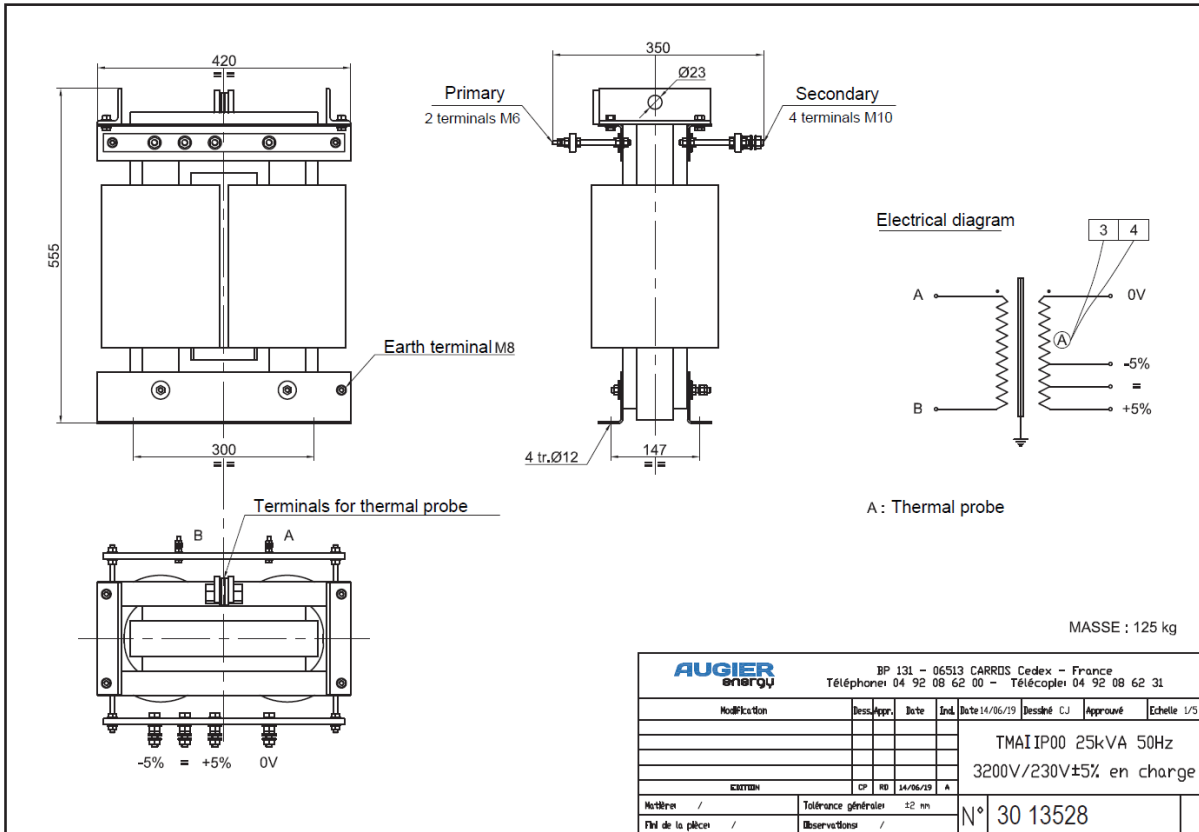
Electrical Specifications	Three phases transformer - UE 548/2014 - 2021										
	Rated power (kVA)	10	16	25	32	50	63	80	100	125	160
	No-load losses (W)	160	175	180	180	180	200	220	252	295	360
	Copper losses (W) à 120°C	350	550	727	1078	1500	1550	1640	1800	2110	2600
	Short circuit voltage (%)	4.5	4.5	4	4	3.9	3.2	4.5	4	4	3.7

# DRAWINGS EXAMPLE

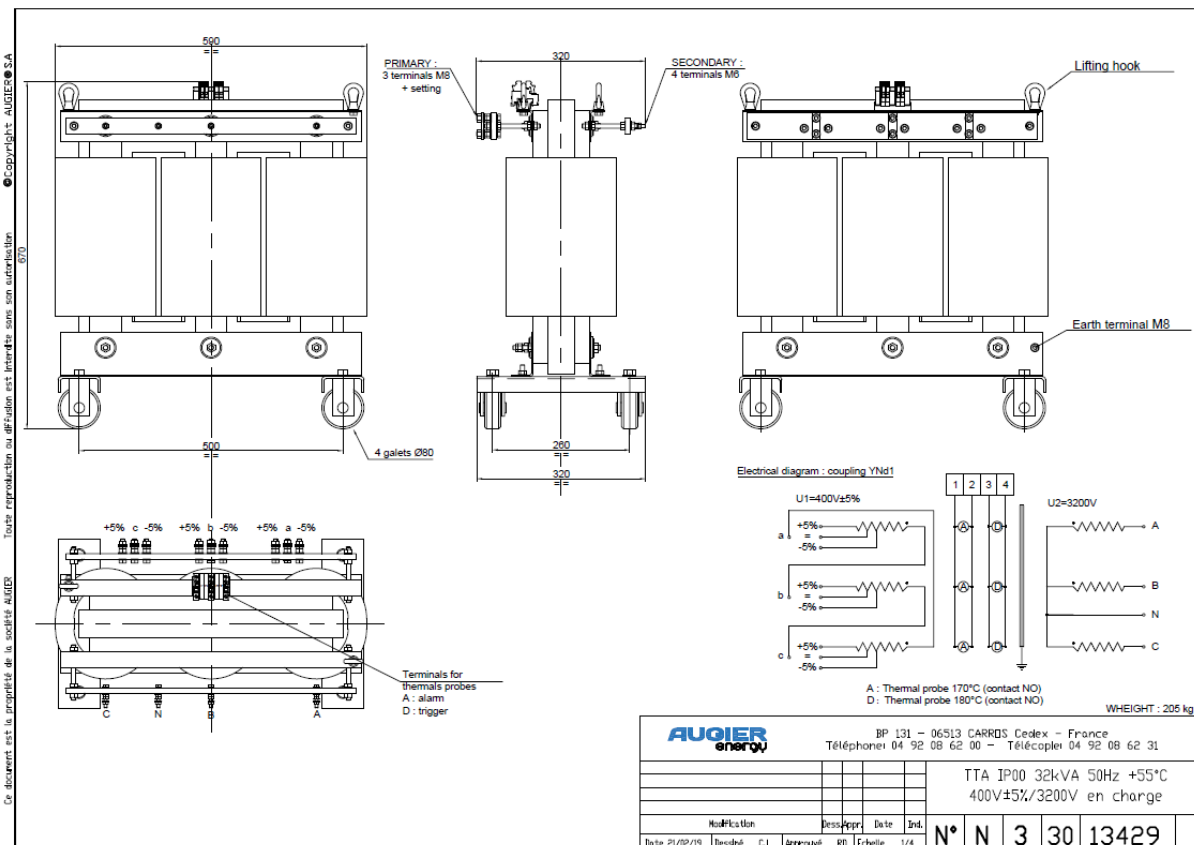
## 3200 V 5500 V 6600 V

# Dry type transformer

- ◆ Single phase transformers 3200 V - 5500 V - 6600 V: Connection, tap changer



- ◆ Three phases transformers 3200 V - 5500 V - 6600 V: Connection, tap changer



AUGIER HAS BEEN ISO 9001 CERTIFIED SINCE 1995



Dealer contact information:

60 40152 With constant improvements, the manufacturer may alter information without prior warning



Zone Industrielle de Carros - 1ère avenue, 13ème rue, n°3890 - 06510 Carros - France  
+33 4 92 08 62 00 | [Contact@augier.com](mailto:Contact@augier.com) | [www.augier.com](http://www.augier.com)